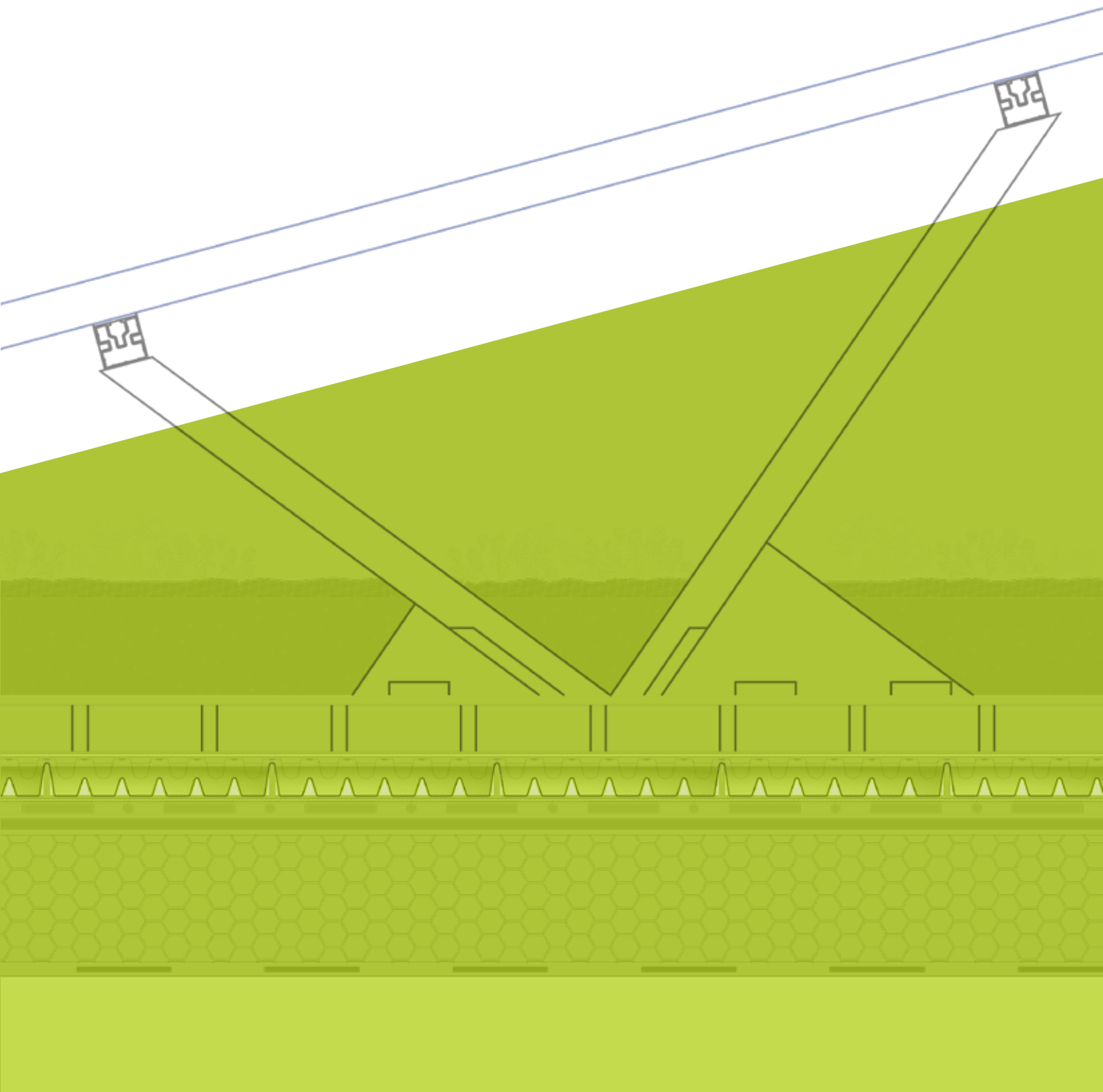


DIASOLAR®

SOLAR SYSTEM INTEGRATED IN THE LAYER STRUCTURE



PHOTOVOLTAICS, GREEN ROOFS AND WATER RETENTION IN ONE!

APP KFT. MAKES IT POSSIBLE.

Combine the benefits of greening and PV installation with the DiaSolar and use your flat roof in a smart way.

ADVANTAGES

- ✓ Penetration-free, ballast due to roof greening
- ✓ Quick & easy installation
- ✓ Optimal use of roof area
- ✓ No loss of yield due to shading of plants
- ✓ Module height lower edge min. 30 cm from substrate
- ✓ Snow slides off quickly
- ✓ No accumulation heat

FACTS

- Plate dimension: 198 x 97 x 6 cm
- Net weight per unit: 12 kg
- Water storage volume: 43 liters
- Material: Aluminum, stainless steel, Magnelis, HDPE

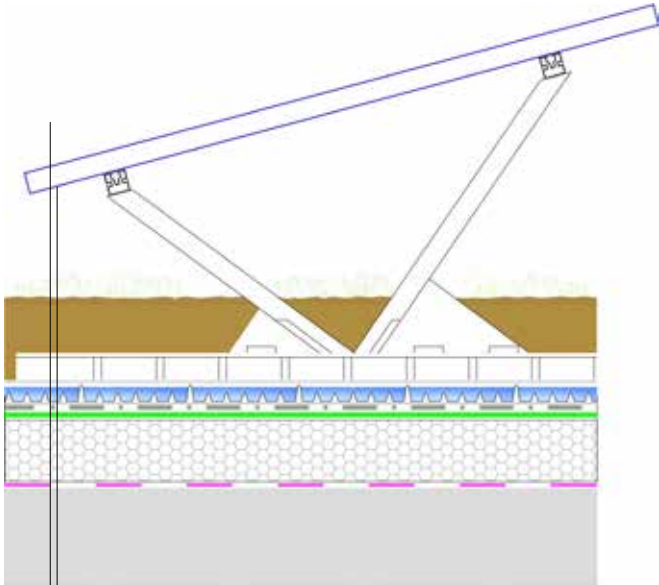
FLAT ROOF ASSEMBLY SYSTEM: DIASOLAR

Panel size of DiaSolar®:	198 x 97 x 6 cm
Weight per unit:	12 kg, Weight without load, without pv-modul
Water storage tank volume:	43 Liter
Compressive strength (unfilled):	> 25 kN/m ²
Compressive strength filled (flush filled):	> 70 kN/m ²
Water drainage:	<ul style="list-style-type: none"> • $i = 0,01$ (= 1% Gradient) 0,4 l/(m*s) • $i = 0,01$ (= 1% Gradient) 0,4 l/(m*s) • $i = 0,01$ (= 1% Gradient) 1.0 l/(m*s)
Material:	Aluminium, magnelis, stainless steel and HDPE
Module inclination:	10° standard, 15° or 20° optional
Ballasting:	The ballast and spacing of the panel must be calculated by DIADEM® in accordance with the Wind Zone Plan.
Roof connection:	No structural connection to the roof required
Roof inclination:	Maximum 5°
Unit consists of:	<ul style="list-style-type: none"> • 1 x DiaSolar® console • approx. 2 m module support profile • Auxiliary material (screws, profile connectors, clamps)
Warranty:	25 years for all aluminium and stainless steel parts 12-year warranty on the tray
Other:	<ul style="list-style-type: none"> • No roof penetrations. • Optimal utilisation of the roof surface. • Ideal for a uniform roof greening • No disturbing interconnections • No shading from plants

DIASOLAR®

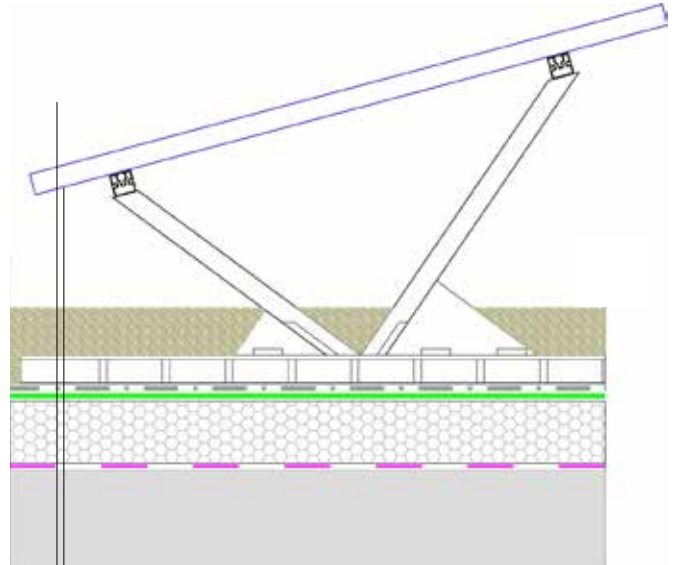
SOLAR SYSTEM INTEGRATED IN THE LAYER STRUCTURE

DIASOLAR® WITH GREEN ROOF



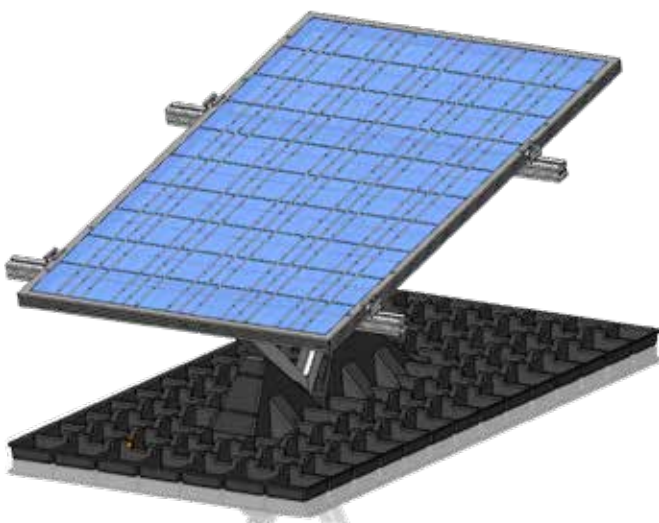
- DIADEM® MAT25** sedum mat
- DIADEM® SEM** substrate for extensive green roofs
- DIADEM® DiaSolar®** solar panel holder
- DIADEM® VLF-150** filter and separator geotextile
- DiaDrain-25H** Flow-delay retention board
- DIADEM® VLU-300** technical protection fleece for extensive roofs
- Root-resistant waterproofing
- Further layer build-up according to architect's specification

DIASOLAR® WITH GRAVEL ROOF

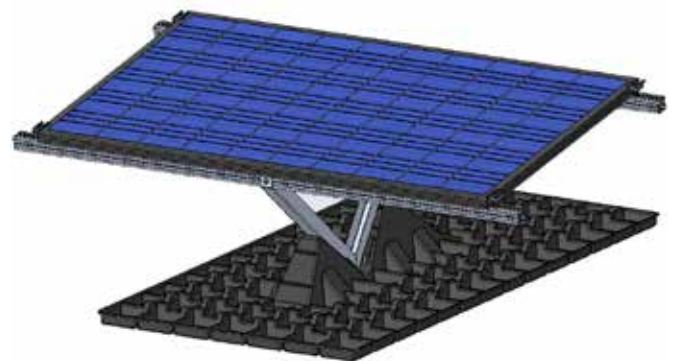


- Gravel ballast**
- DIADEM® DiaSolar®** drainage board
- DIADEM® VLF-150** filter geotextile
- Root-resistant waterproofing
- Further layer build-up according to architect's specification

DIASOLAR® VERTICAL



DIASOLAR® HORIZONTAL



Our references



Contact

DIADEM CH AG

Rauracherweg 1.
CH-4710 Balsthal

Email: info@diadem.com
Mobile: +41 79 328 37 74
www.diadem.ch

APP DACHGARTEN GMBH

Jurastrasse 21
D-85049 Ingolstadt

Email: info@diadem.com
Mobile: +49 841 370 9496
www.grundach.com

A.P.P. Kereskedő és Szolgáltató Kft.

H-9028 Győr
Fehérvári út 75.

Email: info@diadem.com
Phone: +36 96 512 910
www.diadem.com

A green cover is always the best.