

Terrace grid / Terrace grid with adjustable height / Doorstep grille / Gravel basket

## ADVANTAGES

### TRF - terrace grid

- Primarily an accessory product for paved terraces with pedestals
- Can be installed on terraces paved with concrete slabs
- The dense grid space guarantees safe walkway and protects the outlet from pollutions
- Simple installation

### TRH - terrace grid with adjustable height

- Fits every type of terrace outlet
- Load bearing plastic house
- Fits most local height features
- Can be ordered in stain-proof execution

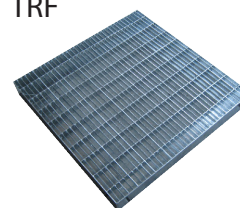
### TRS - doorstep grille

- Robust refined steel cover
- Quick and easy installation
- Fits every outlet
- Can be set up within wide height limits, within 7 to 30 cm stepless

### TRK - gravel basket and gravel basket extension

- It keeps away the growing media from the outlet In case of a high layer structure
- Eliminates contamination and gravel
- Height of the gravel basket can be increased with 20 cm using the extension

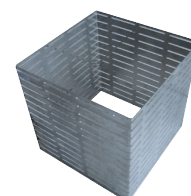
TRF



TRH



TRK



TRS



## SPECIFICATION

### TRF

Step-resistant terrace grid for quick conducting of the surface water on roof terraces, with plastic bottom part and dip galvanized steel mesh grid. Grid opening: 30 x 10 mm; loading class: A15; material of bottom part: polypropylene; material of grid: dip galvanized steel; size: 30 x 30 x 5 cm (L x W x H); mass: 2,3 g/pc.

### TRH

Adjustable height (m= 8 - 11,5 cm), step-resistant terrace grid for quick leading of surface water on roof terraces, bottom part in plastic and dip galvanized mesh grid. Grid opening: 30x10 mm; loading class: A15; material of bottom part: polypropylene; material of grid: dip galvanized steel; size: 30 x 30 x 8-11,5 cm (L x W x M); mass: 2,67 kg/pc.

### TRS

Doorstep-grille with galvanized mesh grating installable in front of open or closed-bottom door-posts for quick water drainage. On plate base 4 pcs, sized D52 mm and 1 pc. D115 mm pre-perforated draintube connection. Grid opening: 40 x 10 mm; loading class: A15; material of bottom part: polypropylene; material of grid: dip galvanized steel; size: 75 x 50 x 5 cm (L x W x M); weight 10,35 kg/pc.

### TRK-20-AL

Aluminium gravel basket, on the side with drainage holes, what impedes the solid materials (e.g. crushed stones) to be washed down into the drainage system by installing it between the outlets and the terrace grid. Size: 20x20x4 cm (LxWxM); mass: 0,14 kg/pc.

### TRK+AL

Aluminium extension for the TRK-20-AL gravel basket, on the side with drainage holes, which provides protection for a higher layer structure from dirt or contamination. Size: 20.3 x 20.3 x 20 cm (L x W x H); weight: 0.3 kg / piece.

Product: DIADEM® TRF / TRH / TRS / TRK

Producer's certificate: A.P.P. Kft.

Website: [www.diadem.com](http://www.diadem.com)



**A.P.P. Kft.**

Tel.: +36 96 512 910 • [info@diadem.com](mailto:info@diadem.com) • [www.diadem.com/hu](http://www.diadem.com/hu)

**APP Dachgarten GmbH**

Tel.: +49 841 370 9496 • [info@diadem.com](mailto:info@diadem.com) • [www.diadem.com/de](http://www.diadem.com/de)

**DIADEM CH AG.**

Tel.: +41 79 516 20 62 • [info@diadem.com](mailto:info@diadem.com) • [www.diadem.com](http://www.diadem.com)

## APPLICATION

### TRF

Made in two types of layouts, step-proof, with dense grid spaced cover panel, simple terrace water outlet produced in several sizes.

### TRH

Step-proof terrace grille with dense grid space, a variety of width and length versions, height adjustable top with a range of 4 cm.

### TRS

Doorstep grilles made in three sizes that can be installed in front of open or closed-bottom door-posts, which, through the galvanized mesh grating, allows surface to get into the drainage layer directly or through the element, and makes the door step non-skid, clean and protect against raindrops spattering.

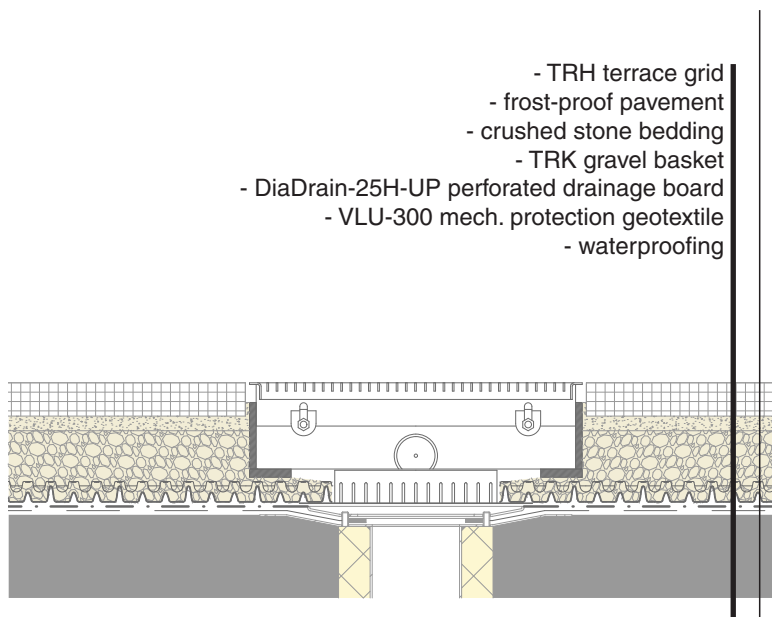
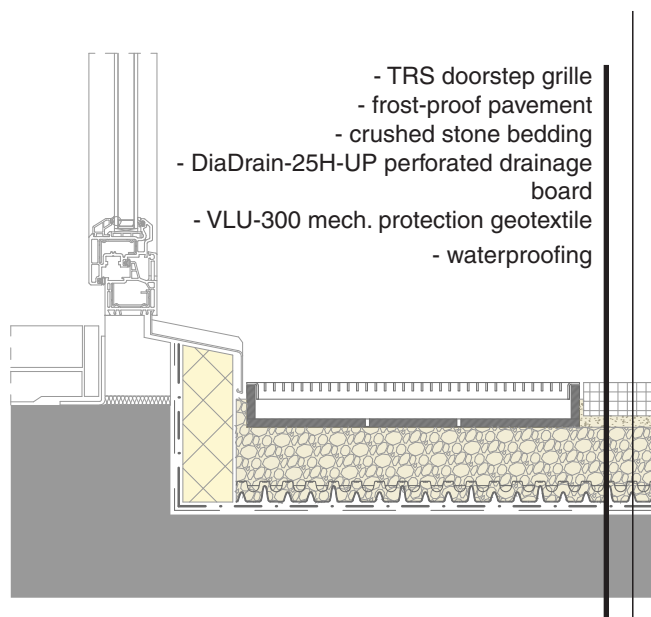
### TRK-20-AL and TRK+AL

An aluminium frame (TRK-20-AL) placed directly around the roof outlet with drainage holes, preventing gravel from the build-up from falling through, and protecting against other contaminants. The gravel basket extension (TRK+AL) is an aluminium frame with drainage holes that can extend the gravel basket's height up to 20 cm, giving it a larger capacity to retain more unwanted material.



Terrace grid / Terrace grid with adjustable height / Doorstep grille / Gravel basket

## DIADEM® BUILD-UP



## TECHNICAL DATA

	Product Nr.	L x W x H (cm)	Weight (kg)	Mesh size	Drainage opening	Material (base)	Material (grating)	
TRF-FF-40-FF	210703	40x40x4	4.6	30x10	-	-	dip galvanized steel (standard) or stainless steel (custom)	
TRF-FF-50-FF	210701	50x50x4	6.16		-	-		
TRF-30-FF-MW-30/10	210572	30x30x5	2.3		-	polypropylene		
TRF-40-FF-MW-30/10	210510	40x40x5	3.79		-			
TRF-50-FF-MW-30/10	210503	50x50x5	5.24		-			
TRH-30-FF-MW-30/10	210668	30x30x8-11,5	2.67		4pcs, D52mm			
TRH-40-FF-MW-30/10	210669	40x40x8-11,5	4.23			4pcs, D52mm		
TRH-50-FF-MW-30/10	210670	50x50x8-11,5	6.4					4pcs, D52mm
TRS-60-FF	210403	60x40x5	6.67					
TRS-75-FF	210404	75x50x5	10.35		4pcs, D52mm			
TRS-100-FF	210405	100x50x5	13.15	4pcs, D52mm				
TRK-20-AL	210801	20x20x4	0.14			-	-	aluminium
TRK+AL	210802	20,3x20,3x20	0.3			-	-	aluminium



100% recyclable



A.P.P. Kft.

Tel.: +36 96 512 910 • info@diadem.com • www.diadem.com/hu

APP Dachgarten GmbH

Tel.: +49 841 370 9496 • info@diadem.com • www.diadem.com/de

DIADEM CH AG.

Tel.: +41 79 516 20 62 • info@diadem.com • www.diadem.com

